



Dashboard



Data  
Consolidator  
Features Set



Data  
Analysis  
Features Set



Charts  
Visual  
Features Set

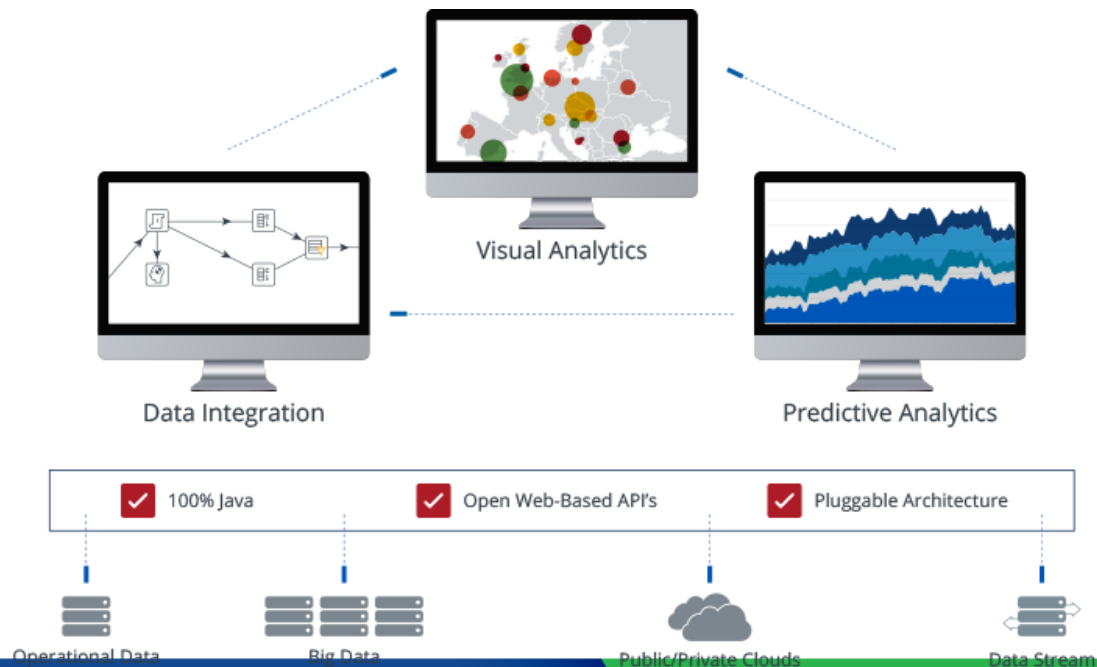


Trend  
Analysis  
Features Set



# OVERVIEW

Dashboard System addresses the barriers that block your organization's ability to get value from all your data. Our platform simplifies preparing and blending any data and includes a spectrum of tools to easily analyze, visualize, explore, report and predict. Open, embeddable and extensible, Dashboard System is architected to ensure that each member of your team — from developers to business users — can easily translate data into value.

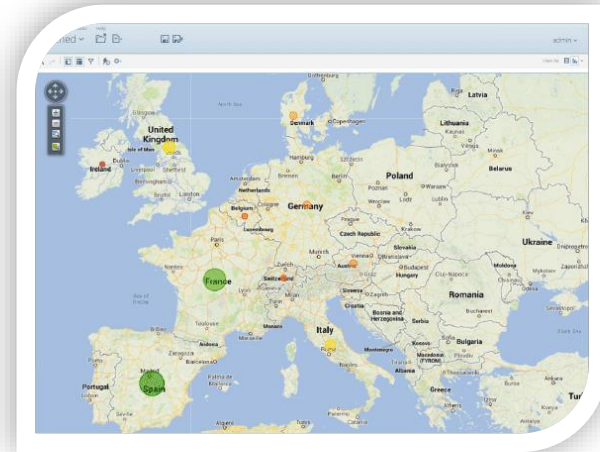


# FEATURES

## INTERACTIVE VISUAL ANALYSIS

Business users are self-reliant and can immediately access, analyze and visualize any data.

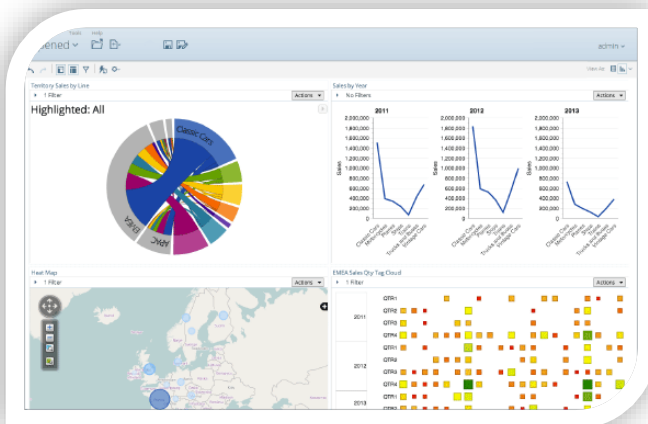
- Interactive visual analysis with drill through, lasso filtering, zooming, and attribute highlighting for greater insight.
- Out-of-the box library of interactive visualizations -- including geo-mapping, heat grids and scatter/bubble charts.
- Specialized, visualization plug-ins deliver "the art of the possible" for advanced visualizations.
- Extreme scale in-memory data caching for speed-of-thought analysis of large data volumes.
- True mobile experience with support for native gestures and complete analytics capabilities, including content creation.



## GRAPHICAL & RESPONSIVE DASHBOARDS

Interactive dashboards offer business users key performance indicators in a highly graphical visual interface to improve organizational performance.

- Web-based drag and drop dashboard design including rich navigation, drilling and a library of filter controls.
- Custom built dashboards uniquely tailored for your business.
- Portal and mash-up integration seamlessly connects business analytics with other applications.
- Learn more about embedded analytics or see how we turn customer mock-ups into customized dashboards in our dashboard gallery. True mobile experience with support for native gestures and complete analytics capabilities, including content creation.
- Simple Statistics Analysis Module



# FEATURES

## COMPREHENSIVE SOLUTIONS FOR REPORTING

Our reporting capabilities span the entire continuum from self-service interactive reporting to high volume, highly formatted enterprise reporting.

- Intuitive web-based interactive reporting for business users.
- Rich graphical enterprise report designer for power users.
- Output in popular formats: HTML, Excel, CSV, PDF and RTF.
- In-memory caching for fast results.
- First to market direct reporting for NoSQL.

The screenshot shows a web application interface for 'STEELWHEELS' with a navigation menu for 'CLASSIC CARS / PLANES / SHIPS / TRAINS'. The main content is an inventory list as of August 22, 2013. The table has columns for Vendor, Bar Code, SKU, Name, Scale, On Hand, Cost, and MSRP. Two items are visible: a 1968 Ford Mustang and a 1966 Shelby Cobra 427 S/C. Each item has a description and a '66 units' or '8,197 units' on hand.

Vendor	Bar Code	SKU	Name	Scale	On Hand	Cost	MSRP
AUTOART STUDIO DESIGN	[Barcode]	S12_1090	1968 Ford Mustang	1:12	66 units	\$ 95	\$ 195
<b>Description:</b> Hood, doors and trunk all open to reveal highly detailed interior features. Steering wheel actually turns the front wheels. Color dark green.							
CAROUSEL DIECAST LEGENDS	[Barcode]	S24_1628	1966 Shelby Cobra 427 S/C	1:24	8,197 units	\$ 29	\$ 50
<b>Description:</b> This diecast model of the 1966 Shelby Cobra 427 S/C includes many authentic details and operating parts. The 1:24 scale model of this iconic lightweight sports car from the 1960s comes in silver and it's own display case.							

## STREAMLINED MANAGEMENT AND ADMINISTRATION

Management and administration enabled with the ideal set of tools for efficient development, deployment and management in a streamlined user environment.

- Analytics security, content permissions, versioning, locking and expiration.
- World class reliability, backup and recovery.
- Enterprise ready data integration with job restart and rollback.
- Performance monitoring and auditing with built in reporting.

The screenshot shows a report titled 'Content Type Usage - Last 24 hrs' for the service 'Analyzer'. The report is dated August 30, 2013 @ 11:11. It contains a table with columns for Content, Avg Duration, # of Executio., and Total Duration. The data shows usage for various content types, with the highest usage being for '/publio/Steel Wheels/Country Performance (heat grid).xanalyzer'.

Content	Avg Duration	# of Executio..	Total Duration
/publio/Steel Wheels/Country Performance (heat grid).xanalyzer	0.06	51	13.05
/publio/Steel Wheels/Territory Sales by Line (Chord).xanalyzer	0.05	42	8.02
/publio/Steel Wheels/Customer Sales (Treemap).xanalyzer	0.02	37	2.69
/publio/Steel Wheels/European Sales (geo map).xanalyzer	0.10	23	35.05
/publio/Steel Wheels/Sales by Product Line (Multi Line Chart).xanalyzer	0.02	17	0.94
New Analyzer Report	0.03	14	17.29

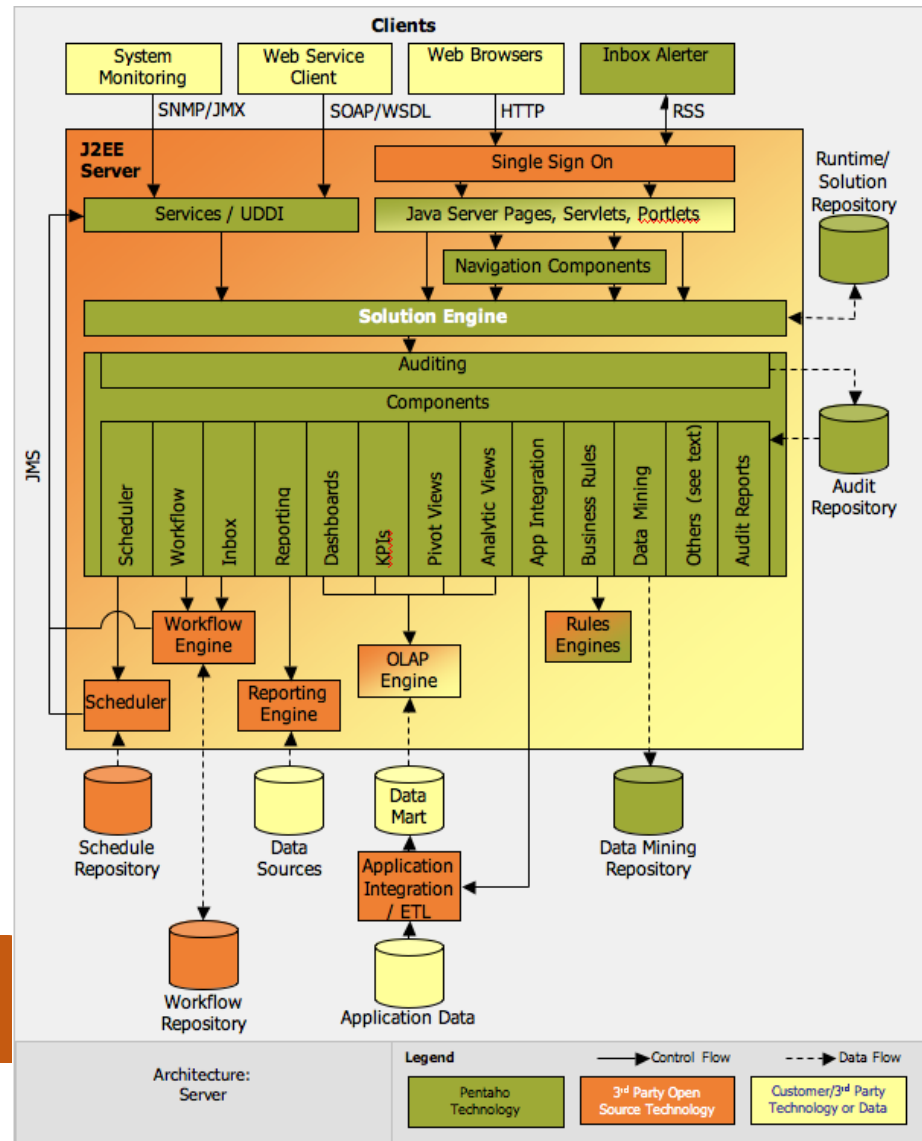
# FEATURES

## EASE OF USE WITH THE POWER TO INTEGRATE ALL DATA

Intuitive drag-and-drop data integration coupled with data agnostic connectivity spanning from flat files and RDBMS to Hadoop and beyond.

- Graphical extract-transform-load (ETL) designer to simplify the creation of data pipelines
- Rich library of pre-built components to access, prepare, and blend data from relational sources, big data stores, enterprise applications, and more
- Powerful orchestration capabilities to coordinate and combine transformations, including notifications and alerts
- Agile views for modeling and visualizing data on the fly during the data preparation process
- Integrated enterprise scheduler for coordinating workflows and debugger for testing and tuning job execution
- Business Intelligence Platform
- Data Mining

## SYSTEM ARCHITECTURE





OMNI-DASHBOARD EXECUTIVE

**Omni Global Technologies, PTE, LTD.**

105 Cecil Street, #13-01, The Octagon,

Singapore 069534 | +65 3157 1823

[marketing@omniglobaltech.com.sg](mailto:marketing@omniglobaltech.com.sg)