



Omni-Assetza

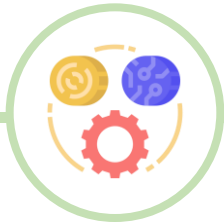


Omni Global Technologies

Asset Management System

OVERVIEW

An asset management system is a process a company uses to manage all of its assets across the business. These assets can be tangible or intangible. They can include personnel, buildings, software and hardware, inventory, monetary assets, and anything vital to the business's day-to-day running.



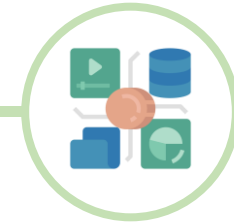
Asset Management Module

- Able to manage the mobile asset database belonging to the military research center.
- Able to flow documents (workflow) related to movable asset management.
- Able to make reports related to moving assets of military research centers.
- Quick to retrieve data and documents related to movable assets.



User Management Module

- Is a user management platform related to asset management of military research centers.
- Data is connected with Identity Management System.



Asset Data Integration

- Able to carry out the process of integrating asset data, both movable and immovable assets belonging to military research centers with other related systems.
- Managed in the form of a unified database.

Asset Management Module



DEVICE

Access the following info: general characteristics of the peripheral (the manufacturer, the model, the type, the serial number); management of the device (the technical manager, his status, the place where it is located); users of the device (known or not in GLPI, group of users).



COMPUTER

Manage and inventory computers. Number of information fields is available: operating system (name, version, service pack), product ID, serial number, the general characteristics (type, manufacturer, model, serial number), information management (technician in charge, status, location) and users of the position (known or not in GLPI).



DATA CENTERS MANAGEMENT

In GLPI you can integrate your Data Centers. You can enter the following info: different data centers; server rooms in centers; elements contained in your server rooms.

User Management Module

USERS

GLPI offers 8 types of profiles and 2 types of interfaces (Standard and Self-service). Self-service interface is dedicated to end users and is free of charge*.



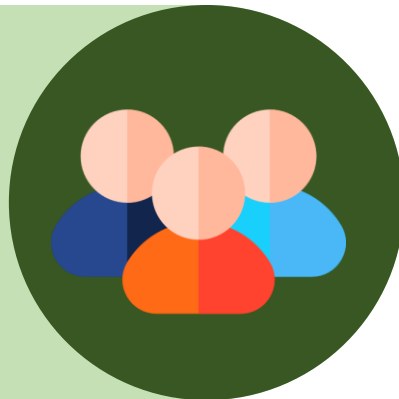
ENTITIES

Entities in GLPI allow to isolate hierarchically organized groups in a single instance of GLPI (a single installation of GLPI). Can be used to create different departments, offices, etc.



GROUPS

In GLPI you can merge identical elements (e.g. "users") of different entities within parent entity.



RULES

GLPI has a rules engine which allows a number of actions and associations to be performed automatically (can be applied for tickets, assets, etc.).



User Management Module

DICTIONARIES

Dictionaries allow you to modify the data that is entered or already exists in GLPI. They are based on the rules engine and are available for certain inventory data (software, manufacturers, titles).



NOTIFICATION QUEUE

Notification queue allows you to monitor the processing of notifications: from emails, browser, webhook (using collaborative tools plugin: mattermost, slack).



PROFILES

GLPI offers 8 types of profiles: Admin, Hotliner, Observer, Read-only, Self-service (simplified), Super-admin, Supervisor, Technician.



LOGS

GLPI has a rules engine which allows a number of actions and associations to be performed automatically (can be applied for tickets, assets, etc.).



Asset Data Integration

API

Application Programming Interface (API) is the most common tool for connecting different applications. There are many different types of API that are either public, partner, or private. What they all have in common is how they enable interaction between applications. An API uses a common code language to specify functionality and set protocols. This gives your applications the ability to transfer data.



Highly Flexible

Because the integration uses product code, it is flexible when it comes to specific data. The only limitation is that it is dependent on developer resources.



App Changes Aren't Disruptive

APIs are often limited in scope. So, service providers can offer more functionality without affecting other third-party systems.



Widely Available

As stated earlier, API is the most common tool for third-party integration. So, it will be unlikely that you run into a service that won't offer API integration options.



Omni-Assetza



Omni Global Technologies, PTE, LTD.

105 Cecil Street, #13-01, The Octagon,

Singapore 069534 | +65 3157 1823

marketing@omniglobaltech.com.sg